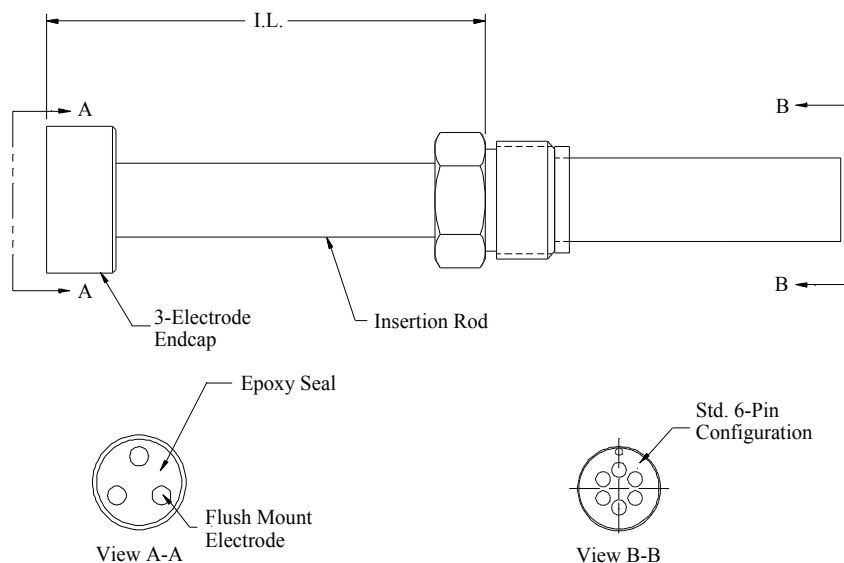


Model LP7210

Linear Polarization Resistance Probe Retrievable with Flush-Mount 3-Electrode Endcap for High Pressure (HP™ and MH™) Access Systems



Model LP7210 is a fixed-length, flush-mount, three-electrode, retrievable, linear polarization resistance probe for use with HP™ and MH™ high pressure access systems. These probes are ideally suited for applications where the probe electrodes need to be flush with the wall of the pipe. The probe assembly consists of an insertion rod, a flush-mount three-electrode endcap, and a six-pin military connector. The hollow plug nut on the probe screws into the hollow plug of the access system. This allows the probe to be installed in the process, using a retrieval tool and service valve, without process shutdown. The probe's three-electrode endcap is filled with an epoxy seal. Electrodes are not replaceable. The insertion length (I.L.) can range from a minimum of 1.75" up to any length specified by the customer in 1/8" increments, using the formula:

$$\text{I.L.} = \text{PD} + \text{WT} + 1.75''$$

(where PD = penetration depth, WT = wall thickness)

For top-of-the-line, flush-mount monitoring, PD = 0.

Note: Formula valid for access fitting heights of 5.25" (HP) and 5.5" (MH).

Specifications:

Probe Body - 316 Stainless Steel

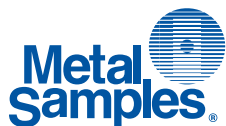
Endcap Seal - Epoxy

Fill Material - Epoxy

Temperature Rating - 500°F / 260°C

Pressure Rating - 3600 PSI / 245 Bar

Mounting - High Pressure (HP™ or MH™) Access System with Hollow Plug



Metal Samples Company

A Division of Alabama Specialty Products, Inc.

152 Metal Samples Rd., Munford, AL 36268 Phone: (256) 358-4202 Fax: (256) 358-4515

E-mail: msc@alspi.com Internet: www.metalsamples.com

Houston Office: 6327 Teal Mist Lane, Fulshear, TX 77441 Phone: (832) 451-6825

LP7210 Ordering Information

Model							
HL	Linear Polarization Three-Electrode Probe for High Pressure Access System						
	Mounting Material						
	2	316					
	3	C276					
		Connector Type					
	2	Standard connector					
		LP Electrode Options					
	4	Three-electrode integral flush type					
	6	Three-electrode integral flush adjustable type					
		Seal Type					
	1	Epoxy					
		Length (Round calculated length to the nearest 1/8")					
		XXXX	Length in inches, stated in 2 decimal place format (Ex: 6 1/8" = 0612)				
		Electrode Alloy					
		XXX	Use Code in Alloy Chart				
HL	2	2	4	1	0612	XXX	Example of Probe Ordering #

Alloy Chart		
Code	Description	UNS #
375	C1010	G10100
419	CDA110	C11000
434	CDA443	C44300
159	316L S.S.	S31603

For alloys, sizes, or other special requirements not listed, contact our sales department.

Note: Not all alloys are available with all element types and seals.