

## Coupon Ordering and Services Available

When placing your order for coupons, be ready to provide the sales person with information regarding the type of material you are testing, the size coupons required, surface finish desired, and if applicable, mounting hole size and location. The following options are available:

- Manufacturing on time and material basis
- Samples mounted on test racks and ready for installation
- Preweighing - coupons are cleaned, preweighed on an electronic scale, and individually packaged
- Weight log charts provided
- Non-standard coupons
- Coupon measuring
- Heat-treating, sensitizing, hot dip galvanizing
- Manufacturing from your material if requested
- Coupons made to specific requirements for mounting hole locations, coupon welding, stressing, and packaging
- Plating - nickel, nickel cadmium, cadmium, chrome, silver, gold, and others upon request
- Electro-polishing, hard facing
- Non-metallic coatings
- Anodizing and alonizing

## Standard Coupons

### Flat Coupons

P/N	Size	Hole	Hole Location	Exposed Area Sq. In.*
CO100	1/2" x 3" x 1/16"	3/16"	1/4" fr. end	3.38
CO101	1" x 2" x 1/16"	3/16"	1/4" fr. end	4.32
CO102	1/2" x 3" x 1/16"	9/64"	1/8" fr. end	3.41
CO103	1/2" x 3" x 1/16"	1/4"	1/4" fr. end	3.34
CO104	1/2" x 3" x 1/16"	(2) 1/4"	1/2" fr. ea. end	3.24
CO105	1/2" x 3" x 1/16"	3/16"	1/2" fr. end	3.38
CO106	1/2" x 3" x 1/16"	1/4"	1/2" fr. end	3.34
CO115	1/2" x 3" x 1/16"	1/4"	1/4" fr. end	3.37
CO117	3/8" x 3" x 1/16"	9/64"	1/8" fr. end	2.64
CO118	1/2" x 3" x 1/16"	(2) 1/4"	1/4" & 3/4" end	3.24
CO120	3/8" x 3" x 1/16"	(2) 1/4"	1/4" & 3/4" end	2.48

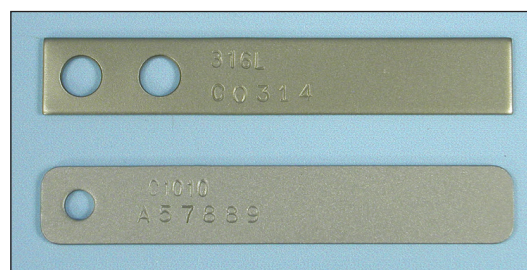
\* Does not include the mounting hole rim(s).

The coupons listed above are made from a variety of materials (see Alloys list).

### Cylindrical Coupons

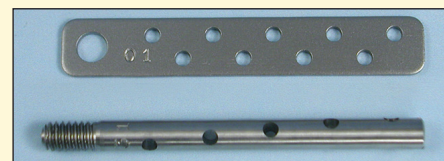
P/N	Size	Thread	Slot	Area Sq. In.
ES200	1/4" Ø x 2 1/2"	1/4"-20 x 3/8"	1/16"	1.74
ES201	1/4" Ø x 2"	1/4"-20 x 3/8"	1/16"	1.35
ES202	1/4" Ø x 3"	1/4"-20 x 3/8"	1/16"	2.14
ES204	1/4" Ø x 1 1/2"	1/4"-20 x 3/8"	1/16"	0.96
ES209*	1/4" Ø x 3"	1/4"-20 x 3/8"	1/16"	2.505

\* ES209 has five 1/8" diameter scale holes.



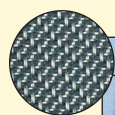
**Scale coupons** (or deposition coupons) provide a qualitative measure of relative deposition rates in industrial water and manufacturing process systems.

P/N CO115 (flat)



P/N ES209 (cylindrical)

**Mesh bio film coupons** are used for quantification or identification of microorganisms.



P/N COJ36

