

# **MS6200L**

## **Benchtop LPR Data Logger**

**Metal Samples Company**

*A Division of Alabama Specialty Products, Inc.*

152 Metal Samples Rd., Munford, AL 36268 Phone: (256) 358-4202 Fax: (256) 358-4515

E-mail: [msc@alspi.com](mailto:msc@alspi.com) Internet: [www.metalsamples.com](http://www.metalsamples.com)



# Table of Contents

I. Introduction .....	1
A. Instrument Function Overview .....	1
B. Instrument Parts List .....	2
II. Setup .....	3
A. Enclosure Details .....	3
B. Power Connection .....	4
C. Probe-Instrument Connection .....	5
D. Data Download Connection(s) .....	6
III. Operation .....	7
A. Main Menu Overview .....	7
B. Program Setup .....	9
1. Set Time and Date .....	9
2. Enter Probe ID .....	10
3. Start Data Logging .....	11
C. Measure Probe Function .....	12
D. View Stored Data Functions .....	13
E. Set Reading Interval Function .....	14
F. Downloading Data .....	15
1. Upload to PC .....	15
2. Upload to MS1500L .....	24
G. System Shutdown Function .....	25
H. Test Mode Function .....	25
Appendix A - MS6200L Specifications .....	26
Appendix B - Derivation of Alloy Constant .....	27
Appendix C - Service & Warranty Information .....	33



# I. Introduction

## A. Instrument Function Overview

The MS6200L is a benchtop LPR data logger designed to provide a continuous record of corrosion activity using a standard LPR corrosion probe. It is compatible with any Metal Samples LPR probes, as well as those of other major manufacturers.

The MS6200L will measure the corrosion rate automatically on a user-programmed interval, and will store the data in the unit's onboard memory. The onboard memory will store up to 3000 data points. The stored data can be downloaded to a PC for analysis using the included CDMS software, or using other spreadsheet or analysis programs.

A key feature of the MS6200L is the ease of use. All functions are accessed via a simple menu-driven interface using the two-key keypad and LCD display.

The compact benchtop enclosure is intended for laboratory use and requires minimal counter space. The adjustable handle allows the unit to be tilted upward for ease of viewing, or it can be positioned straight to allow multiple units to be stacked.



## B. Instrument Parts List

The MS6200L is supplied with the following accessories.

<b>Part no.</b>	<b>Qty.</b>	<b>Description</b>
ET1213	1	Power Supply
ET2106	1	US Plug Adapter
ET2107	1	EU Plug Adapter
IN1500L-3	1	Meter Prover
IN1500L-5	1	6 To 5 Pin Probe Adaptor
IN3500-2	1	Optilink Cable
IN3500-4	1	10 Ft. Probe Cable
IN3500-6	1	Serial Port Adaptor
IN3500L-2	1	Operations Manual
IN3500L-4	1	Galvanic Probe Adapter

Upon receipt of the instrument, the user should verify that the above listed accessories are included. Any shortage should be reported immediately to:

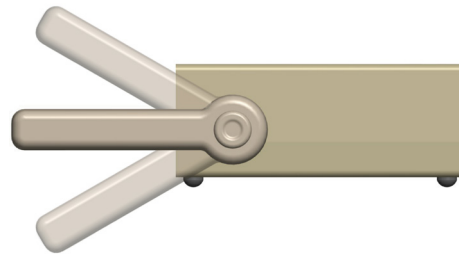
Metal Samples  
Phone: (256) 358-4202  
Fax: (256) 358-4515  
E-mail: [msc@alspi.com](mailto:msc@alspi.com)

## II. Setup

### A. Enclosure Details

The MS6200L is housed in a compact, lightweight, benchtop enclosure designed for use in a laboratory or office environment. It offers a small footprint and requires minimal counter space. It is also lightweight and can be moved easily from site to site. The unit's overall dimensions are only 2.6" high x 10.3" wide x 6.5" deep (10.21" deep including the swivel handle), and the unit weighs only 2.25 lbs.

The versatile handle swivels and locks at 30° increments, allowing it to be used as a carrying handle or tilt-stand, or to be folded out of the way for storage.



## B. Power Connections

The MS6200L requires a regulated 9 VDC input. The power connection is a 5.5mm x 2.5mm center-positive jack located on the back of the unit.

The included power supply provides the correct voltage and polarity, and has the proper mating plug for use with the MS6200L. If it is necessary to replace the power supply, it should be replaced with one having the same specifications and plug. Use of a different supply voltage, an unregulated power supply, or a supply with the wrong polarity may cause damage to the instrument.



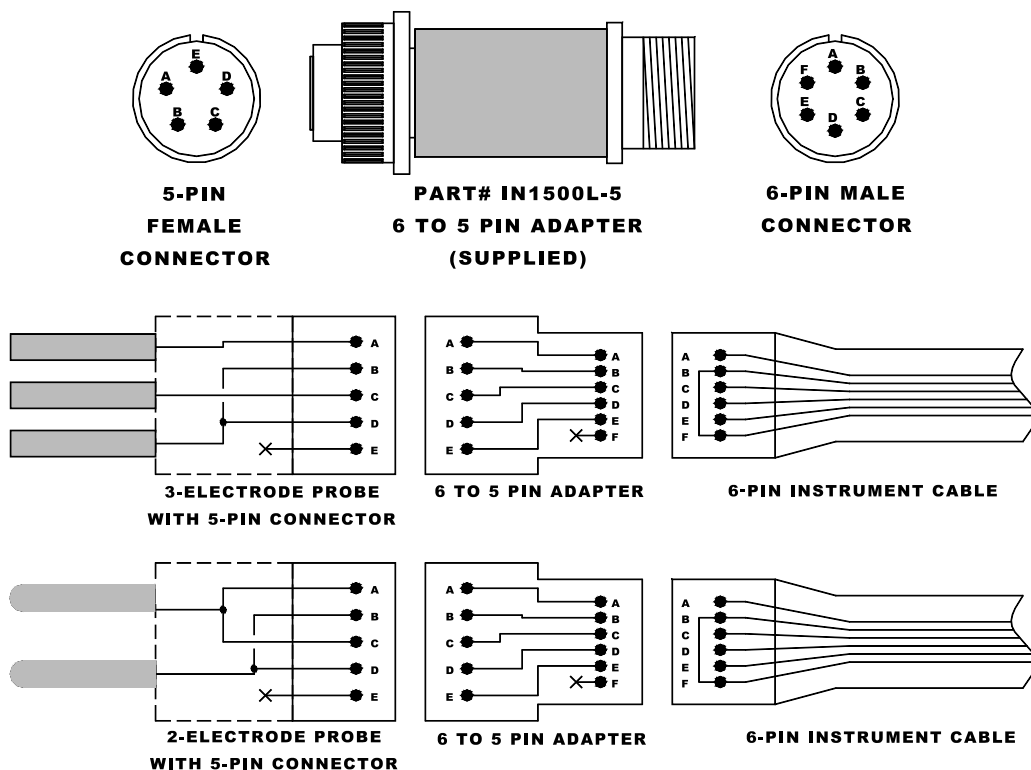


## C. Probe-Instrument Connection

The MS6200L connects to an LPR probe using the supplied probe cable which has an alignment key to ensure proper pin alignment. The female connector mates with the probe and the male connector mates with the central terminal on the back of the MS6200L unit.

**The length of the extension cable has been carefully determined so as to avoid excessive signal noise. Longer extension cables should only be employed after consultation with Metal Samples.**

The extension cable provided will mate directly with any Metal Samples' LPR probe or those of any other major manufacturer, which use a standard six-pin connector. For probes which use a five-pin connector instead of a six-pin connector, the IN1500L-5 (6 to 5 pin adaptor) is used.



In some cases the user may encounter probes with non-standard wiring. In this case a custom adapter may be required. Alternately the IN1500L-4 flying lead adapter (sold separately) may be used. The IN1500L-4 consists of a standard instrument-end connector, while the probe-end terminates in flying leads with alligator clips. This allows the user to make connections as required for non-standard probes.

## D. Data Download Connection

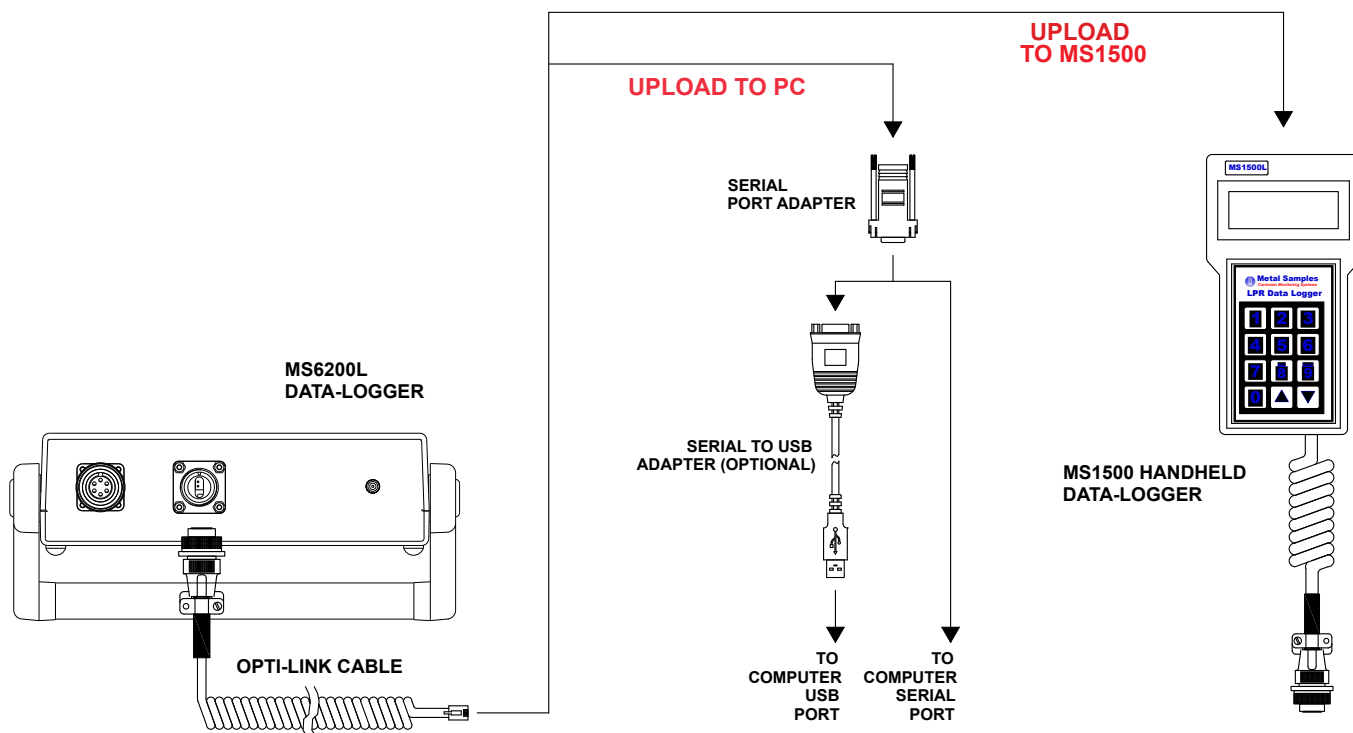
To download data from the MS6200L to a PC use the Optilink Cable and Serial Port Adaptor.

**Note: Do NOT plug the phone jack on the end of the Optilink Cable directly into your PC's modem.**

If a serial port is unavailable on your PC and you wish to connect the MS6200L to your PC via a USB port, you may use a serial to USB converter. This converter is not included with the instrument, but may be purchased separately at major electronics retailers.

To download data from the MS6200L to a MS1500L connect the Optilink Cable directly to the MS1500L.

Detailed instructions of data downloading are given on p.15.



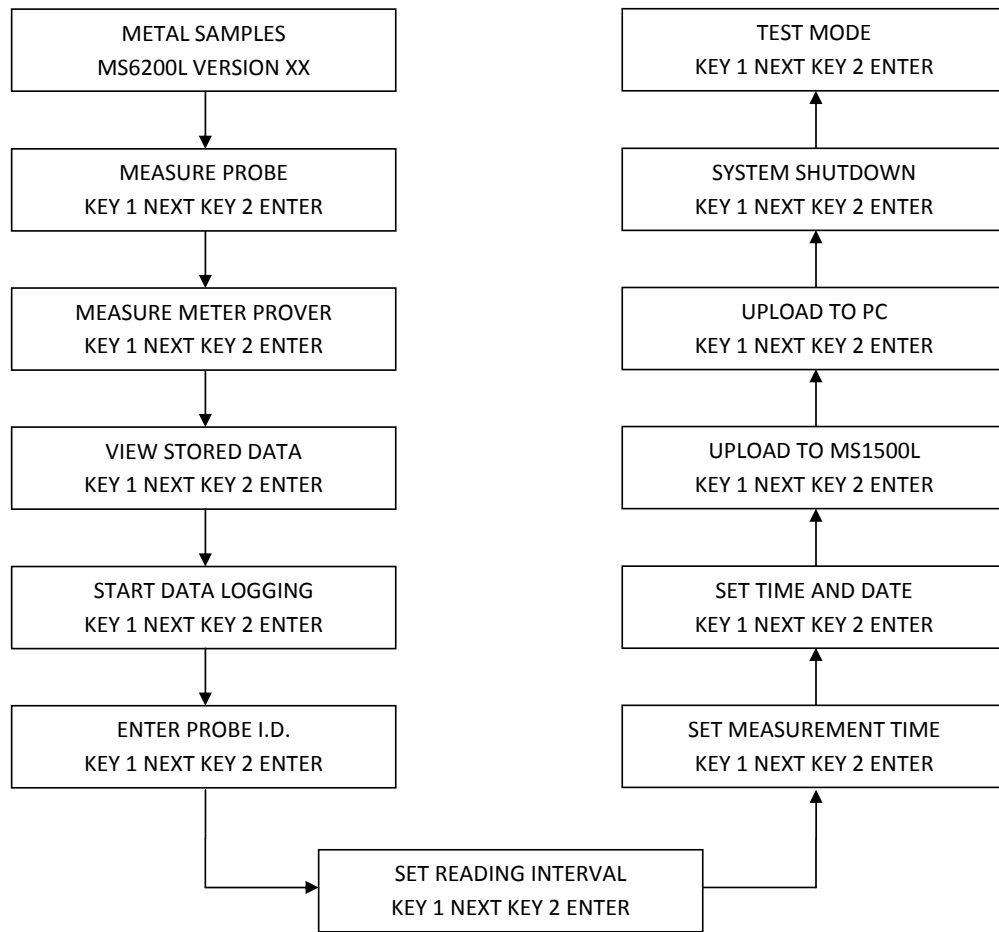
# III. Operation

## A. Main Menu Overview

Once the power is connected to the MS6200L, the instrument screen may be activated by pressing either of the keys on the front panel. The company name “METAL SAMPLES” and software version will appear, then after a few seconds will automatically change to the first of the function screens that constitutes the main menu.

A series of nine function screens can be accessed simply by scrolling using KEY 1 on the instrument keypad. Each of the nine function screens allows entry into a submenu to initiate an action such as MEASURE PROBE or START DATA LOGGING; alternatively it allows input of data such as probe identification or reading interval.

Each of the function screens and their submenus are fully explained later in the manual. The following diagram shows the sequence of access to the twelve function screens:



As explained, each function screen gives access to a submenu, the purpose of which is briefly described below:

**MEASURE PROBE.** This will override the normal interval of logging readings to allow a spot check reading to be obtained on screen.

**MEASURE METER PROVER.** Used to test the instrument with the Meter Prover.

**VIEW STORED DATA.** Allows visual review of all readings logged.

**START DATA LOGGING.** Initiates the data logging process after input of appropriate start-up data.

**ENTER PROBE ID.** Allows input of probe type and reading interval. Together with “SET TIME AND DATE”. This constitutes initial start-up data.

**SET READING INTERVAL.** This allows the initial reading interval that is input under “PROBE ID” to be changed without deleting stored data.

**SET MEASUREMENT TIME.** This allows the initial measurement (polarization) time that is input under “PROBE ID” to be changed without deleting stored data.

**SET TIME AND DATE.** This constitutes the initial step of start-up data, allowing correct setting of the “real time” clock.

**UPLOAD TO MS1500L.** This activates the download of stored data to the MS1500L or to a personal computer.

**UPLOAD TO PC.** This activates the download of stored data to a personal computer.

**SYSTEM SHUTDOWN.** This will stop the logging process, and minimize power consumption without deleting stored data.

**TEST MODE.** This supplies instrument trouble shooting data.

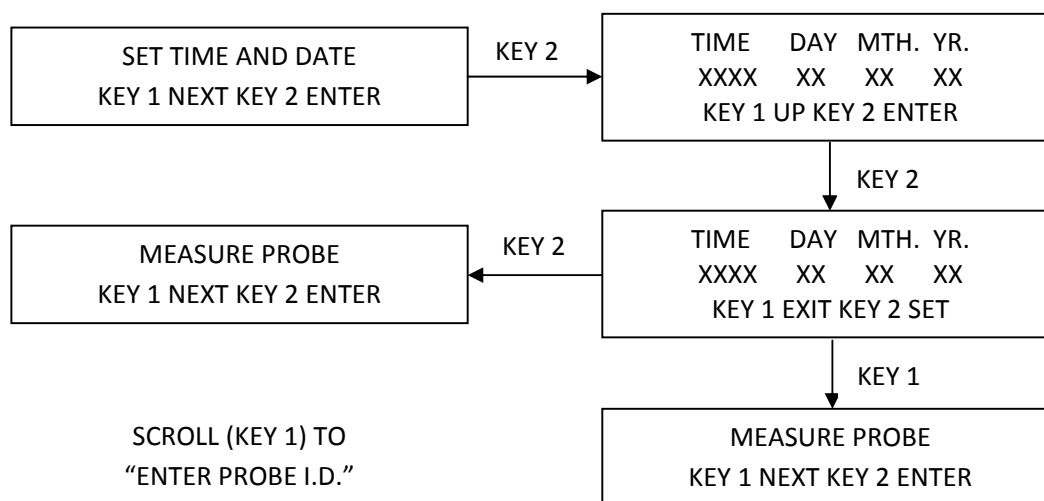
## B. Program Setup

Having connected the power, the MS6200L is ready for start-up programming which comprises the following sequence:

- SET TIME AND DATE
- ENTER PROBE ID
- START LOGGING

### 1. Set Time and Date

This operation is illustrated below:



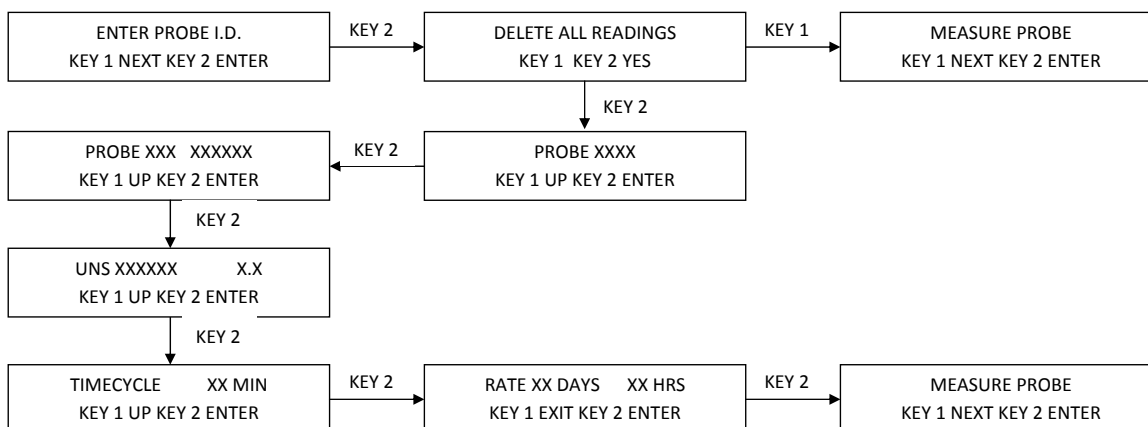
The screen of the instrument is initially activated by pressing either key. The “SET TIME & DATE” function screen is then accessed by scrolling through the main menu using KEY 1. KEY 2 allows entry into the submenu, and the time and date setup screen will be shown. Each digit of the time, day, month, and year is sequentially set using KEY 1 to select the appropriate digit, and KEY 2 to enter the digit and move the next digit of the time and date sequence.

Once the final digit of the year is entered, using KEY 2, the screen will automatically change to the time/date display screen. This screen shows the time and date as set up. KEY 2 will accept and store this time and date. KEY 1 will reject this information. Either key will automatically return the user to the “MEASURE PROBE” screen of the main menu. If the time and date has been rejected, scroll to the “SET TIME & DATE” function screen, re-enter the submenu and make the necessary corrections. If the time and date are correct, and the user has used KEY 2 to accept the information, scroll to the “ENTER PROBE ID” function screen to continue with program setup.

**Please note that the time and date, once set, should not require alteration. Should the user decide to change the time and date while probe data is stored in memory, all data will be displaced in time and highly inconvenient to interpret.**

## 2. Enter Probe ID

This function will allow the user to identify the particular probe type or installation location with a unique, 4-digit tag number. Additionally, it allows the selection of the desired measurement type. Finally, it allows the user to select the data collection rate. The operational sequence is as follows:



Once the “ENTER PROBE ID” function screen is located on the main menu, KEY 2 will give access to the submenu. The initial screen of the submenu allows deletion of any stored data. Normally there will be no data stored, since any useful data set will have been previously downloaded. If no useful data is stored in the unit, press KEY 1 which will delete all existing data and give access to the Probe ID screen. **If useful data is stored, use KEY 2 to return to the main menu and download existing data (p. 18) prior to proceeding.**

The Probe ID screen allows you to insert a 4-digit identification number for the probe and/or monitoring location. Each digit is selected with KEY 1, and individually entered with KEY 2. When the fourth digit of the ID number is entered, the screen will automatically change to the “measurement type” selection screen.

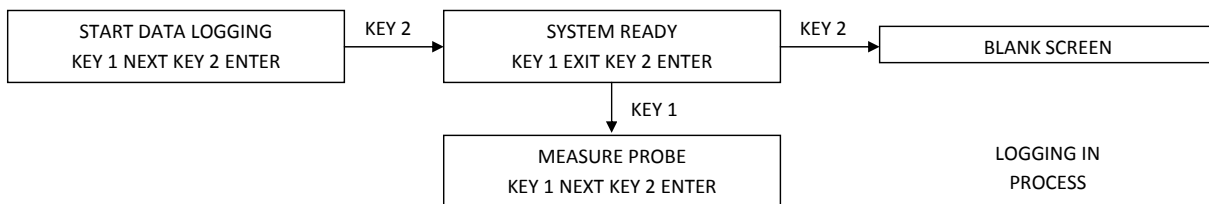
The measurement ID screen allows the user to select the measurement type by using the “ARROW” keys to scroll, and the “ENTER” key to select. The measurement types that are selectable are:

- LPR3A: 3-electrode, linear polarization (corrosion rate) using anodic polarizing current
- LPR3C: 3-electrode, linear polarization (corrosion rate) Using cathodic polarizing current
- LPR2: 2-electrode, linear polarization (corrosion rate)
- GALV: 2-electrode, zero-resistance, current measurement
- POT.: 2-electrode potential measurement

Upon entry of the probe element ID, the screen will automatically change to the cycle time screen. This allows the user to select the cycle time with which the probe will read. This can be set in increments from one minute to 15 minutes. KEY 1 is used to increase cycle times, KEY 2 is used to enter the selected cycle time. The reading frequency is next set on the screen as hours (two digits) and minutes (two digits). The default reading is 1 per hour. Each digit is selected by a KEY 1 scroll, and individually entered with KEY 2. Once the last minute digit is entered, the next screen will be displayed which shows the reading frequency as entered, which can then be accepted (KEY 2) or rejected (KEY 1). If accepted, the screen will revert to the “MEASURE PROBE” function screen, and the user can proceed to the “START DATA LOGGING” function. If rejected, the screen will also revert to the “MEASURE PROBE” function screen, but the user is now required to access the “PROBE ID” function and reset/correct the probe ID, the element ID, and the reading frequency prior to commencing with the data logging process.

### 3. Start Data Logging

This is the simple sequence of commands that sets the logging process in motion:



The submenu is entered from the “START DATA LOGGING” main menu function screen, using KEY 2. The first submenu screen is the “SYSTEM READY” screen, from which KEY 2 will start the logging process and shut down the screen for power conservation. If, for any reason, the user does not wish to commence logging, KEY 1 will allow escape to the “MEASURE PROBE” screen of the main menu.

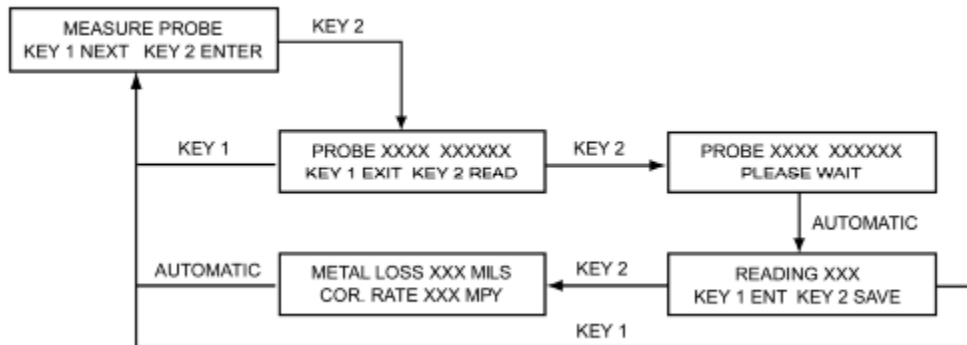
Once logging is activated, it will continue until the user activates the system shutdown routine. All data collected to this point will be retained, but no additional data will be collected. Entering a new probe ID will also stop the logging process and eliminate all existing probe data from the memory. **Prior to entering new probe ID, ensure that all useful data is downloaded.**

Should logging continue in an uninterrupted fashion until the memory capacity of the unit is full, additional data will sequentially overwrite the initial data points stored in memory.

**The user should always set a download schedule of sufficient frequency so that no more than 3,100 readings are taken between download operations.**

## C. Measure Probe Function

The “MEASURE PROBE” function allows the user to make a spot-check probe reading at any time, without constraint of the normal logging interval. The submenu sequence is illustrated below:



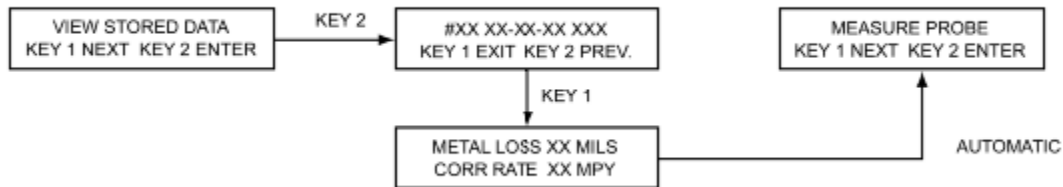
The first screen of the “MEASURE PROBE” submenu displays the probe I.D. number and measurement type. KEY 1 exits to the main menu “MEASURE PROBE” function screen and KEY 2 will activate a measurement.

If KEY 2 is used to activate a measurement, the second submenu screen will be shown that displays the probe I.D. and test mode, and a “PLEASE WAIT” notation. After approximately 5 minutes, the reading will be complete and the third submenu screen will be automatically displayed. This screen will show the current corrosion rate in MPY, and will give a KEY 1 EXIT option, and a KEY 2 ENTER (save) option. KEY 1 will return the user to the “MEASURE PROBE” function screen, KEY 2 will save the probe reading and automatically display the fourth submenu screen.



## D. View Stored Data Functions

This facility allows all data stored in the MS6200L to be called up on the screen for review. The submenu sequence is shown below:



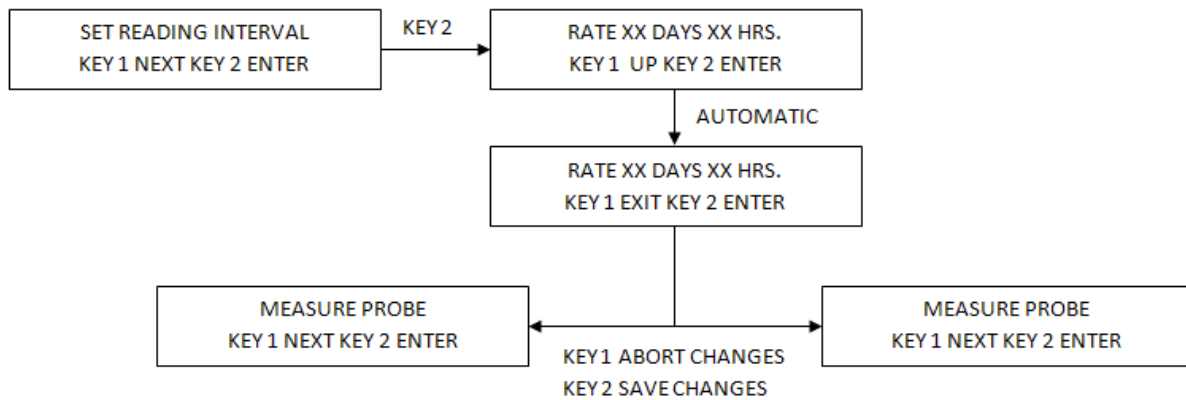
After pressing either key to access the MS6200L screen, KEY 1 is used to scroll to the “VIEW STORED DATA” function screen. KEY 2 is then used to enter the submenu.

Previous readings may be accessed sequentially using KEY 2. KEY 1 will exit the review screen, and display metal loss (MILS) and average corrosion rate (MPY) for the reading displayed when the exit key is used. The metal loss/corrosion rate screen will display for approximately 30 seconds before automatically returning to the “MEASURE PROBE” function screen.

The “VIEW STORED DATA” function may be used at anytime without disrupting normal logging.

## E. Set Reading Interval Function

This function permits the reading interval to be changed at any time during logging without disrupting the logging process or deleting the stored data. The operation sequence is as follows:



After any key is used to activate the screen, KEY 1 is used to scroll to the “SET READING INTERVAL” main function screen. KEY 2 then allows entry into the submenu.

The current reading interval is displayed as hours and minutes. Individual digits may be altered using KEY 1, and entered using KEY 2. After the final hour digit is entered, the screen will automatically change to a reading interval confirmation screen. The interval as entered is displayed. KEY 1 will exit to the “MEASURE PROBE” main function screen without entering (saving) the new interval. KEY 2 will enter (save) the new reading interval, then automatically return to the “MEASURE PROBE” main function screen, further logging takes place at the new reading interval.

## F. Downloading Data

Data stored in the MS6200L unit may be downloaded, via the Opti-Link port, directly to a PC. Alternatively, data may be downloaded to Metal Samples' MS1500L Hand-Held Data Logger, and subsequently transferred to a PC. Direct downloading is usually preferred in a control room or laboratory environment. Where several MS6200L units are distributed in a field environment, the data is most conveniently transferred via the MS1500L to a PC. The MS1500L will accept data from as many as one hundred MS6200L units for subsequent transfer to a PC.

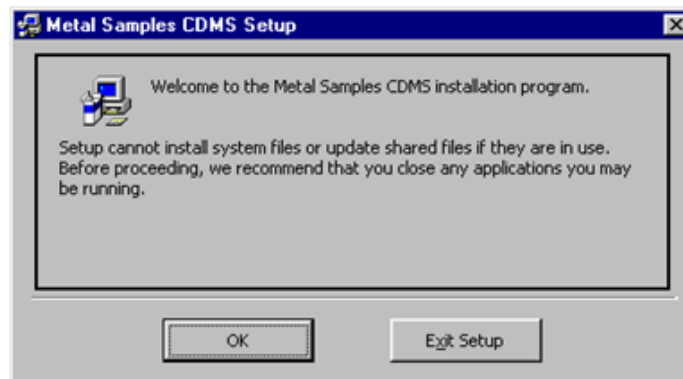
### 1. Upload to PC

To transfer data to a PC it is necessary to install the Corrosion Data Management Software. To run the Corrosion Data Management Software, you need a PC that meets the following requirements:

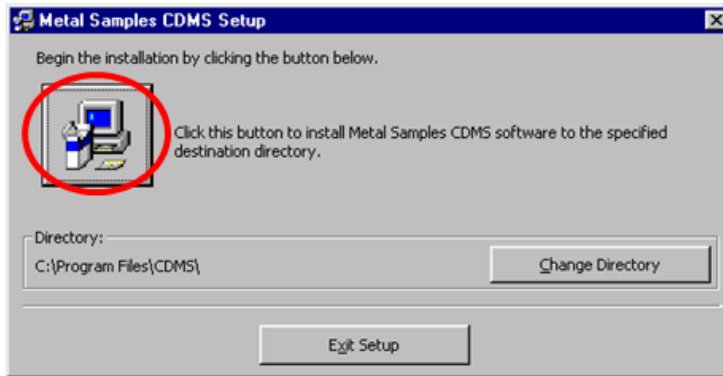
- Pentium® class processor
- Windows® 95 or higher operating system
- 16 MB of RAM
- 10 MB of available hard-disk space
- VGA monitor with 800 600 or greater resolution
- Mouse or pointing device recommended
- Available 9-pin serial port or USB port
- CD-ROM drive for software installation

To install the Corrosion Data Management Software:

1. Insert the setup disk provided in your accessory kit.
2. You will be prompted to close any open programs. After you have done so, click *OK* to continue.



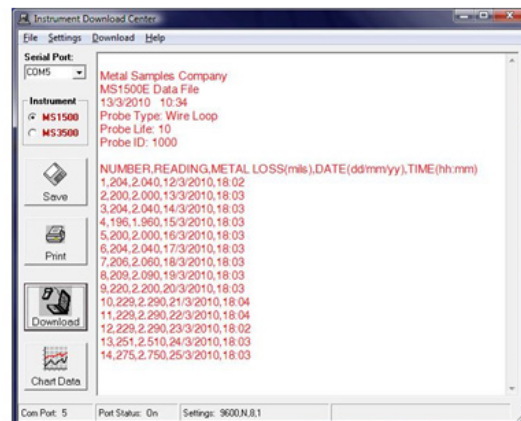
3. Click the install button to begin installation. Note, it is recommended that you install the software in the default directory.



4. After clicking the install button, the software will be installed on your PC.
5. When the software installation is complete you should remove the setup disk, then reboot your computer.

### Instrument Download Center

The Instrument Download Center is a simple tool for retrieving data from Metal Samples ER and LPR data logger instruments.



To download data from an instrument:

- Connect the instrument to an available PC serial port or USB port (see page 6.)
- Turn the MS6200L on.
- Run the Corrosion Data Management Software

- Open the Instrument Download Center
- Select the serial port and instrument (select model MS3500 if your software does not list an option for model 6200L).
- Click the *Download* button (ensure that Part Status toggles to “On”).
- From the main menu of the instrument, select UPLOAD TO PC.

Data will begin to transfer from the instrument to the PC, and will appear in the data window of the Instrument Download Center as shown above. If the data appears garbled, the wrong instrument type has been selected. Select another instrument type and try again. If data does not appear in the data window at all, verify that:

- The instrument is connected to a valid serial or USB port
- All cables are securely connected
- The message “Port Status: On” appears in the status bar
- There are no errors on the instrument
- If using a USB adapter, ensure that the device drivers have been installed.

### **Selecting a Serial Port**

Use the *Serial Port* selection box to select the port to which the instrument is connected. If the COM port number is unknown, it can be found in Windows Device Manager under “Ports (COM & LPT)”.

### **Selecting an Instrument**

Use the *Instrument* option box to select the model of Metal Samples instrument being downloaded. This sets the appropriate communication parameters, which will be displayed in the status bar at the bottom of the window (“9600,N,8,1” for an MS1500, “2400,N,8,1” for an MS6200L).

### **Downloading Data**

To toggle the selected port on and off, click the *Download* button. Toggling the port on and off will also clear the data window.

Once a valid serial port and instrument have been selected, click the *Download* button to turn the port on and enable the computer to receive data. If a valid serial port has been selected, the status bar at the bottom of the window will display the message “Port Status: On”. If an invalid serial port has been selected, an error message will appear, and the status bar will display the message “Port Status: Off”. If this happens, another serial port should be selected.

**Saving Data**

To save the data in the data window, click the *Save* button. The data is comma-delimited ASCII text. It can be saved to a standard text (.txt) file, or it can be saved to a comma-separated values (.csv) file, which greatly simplifies the process of importing the data into a spreadsheet program such as Excel®.

**Printing Data**

To print the contents of the data window, click the *Print* button. A print dialog box will be displayed to allow printer selection and setup.

**Charting Data**

To chart the contents of the data window, click the *Chart Data* button. If the data has not yet been saved, the user will be prompted to do so before the charting process begins. For more information on charting data, see the Data Analysis section.

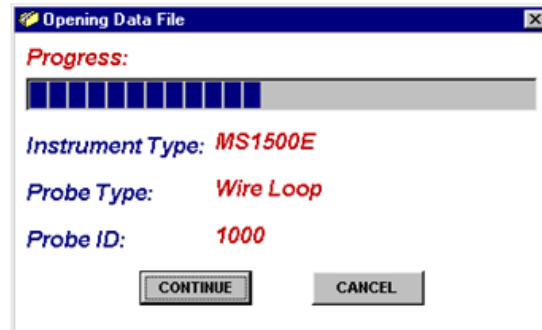
**Data Analysis**

The Data Analysis utility is a convenient tool for charting data from Metal Samples ER and LPR data logger instruments. The Data Analysis utility can be opened from the Main Menu, or it can be opened directly from the Instrument Download Center.

If the Data Analysis utility is opened from the Instrument Download Center, the contents of the data window will be loaded into the chart. However, if the Data Analysis utility is opened directly from the Main Menu, a valid data file must be loaded. The *Select File* box will open to allow selection of a data file.

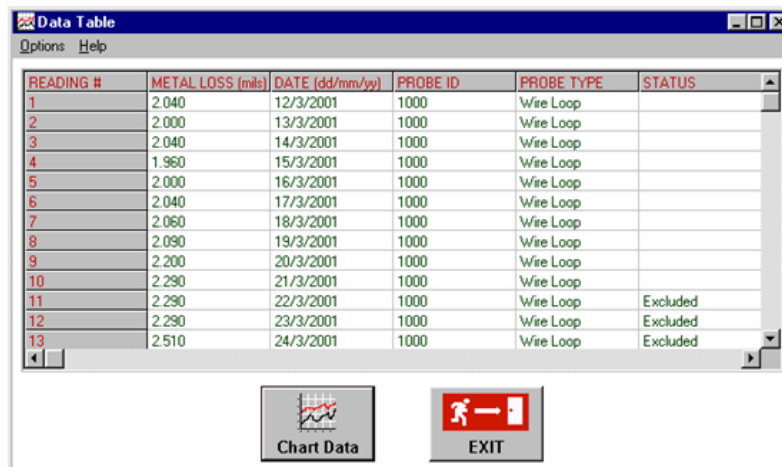
## Loading a Data File

After selecting a data file (or clicking the *Chart Data* button from the Instrument Download Center) a status window will display the progress of the file being opened, along with the Instrument Type, Probe Type, and Probe ID for the data file.



## Data Table

After a file has been successfully loaded, the data will be displayed in the Data Table for review. By default, all data points will be included in the chart. However, data points can be turned off, or excluded, from the chart. If the "Excluded" flag appears in the status column for a data point, that data point will not appear in the chart. To toggle the exclude/include status of a data point, double-click the data point, or select the data point and click *Exclude/Include* in the *Options* menu.



The image shows a window titled "Data Table" with a menu bar containing "Options" and "Help". The main area contains a table with the following data:

READING #	METAL LOSS (mils)	DATE (dd/mm/yy)	PROBE ID	PROBE TYPE	STATUS
1	2.040	12/3/2001	1000	Wire Loop	
2	2.000	13/3/2001	1000	Wire Loop	
3	2.040	14/3/2001	1000	Wire Loop	
4	1.960	15/3/2001	1000	Wire Loop	
5	2.000	16/3/2001	1000	Wire Loop	
6	2.040	17/3/2001	1000	Wire Loop	
7	2.060	18/3/2001	1000	Wire Loop	
8	2.090	19/3/2001	1000	Wire Loop	
9	2.200	20/3/2001	1000	Wire Loop	
10	2.290	21/3/2001	1000	Wire Loop	
11	2.290	22/3/2001	1000	Wire Loop	Excluded
12	2.290	23/3/2001	1000	Wire Loop	Excluded
13	2.510	24/3/2001	1000	Wire Loop	Excluded

At the bottom of the window, there are two buttons: "Chart Data" (with a graph icon) and "EXIT" (with a red stop sign icon).

## Printing Data

The data table can be printed by clicking *Print* in the *Options* menu. A print dialog box will be displayed to allow printer selection and setup.

## Creating A Chart

To chart the selected data, click the *Chart Data* button, or select *Chart Data* from the *Options* menu. The chart will be displayed in a new window.



## Printing a Chart

A chart can be printed using the *Print Chart* option in the *File* menu. A print dialog box will be displayed to allow printer selection and setup.

## Exporting a Chart

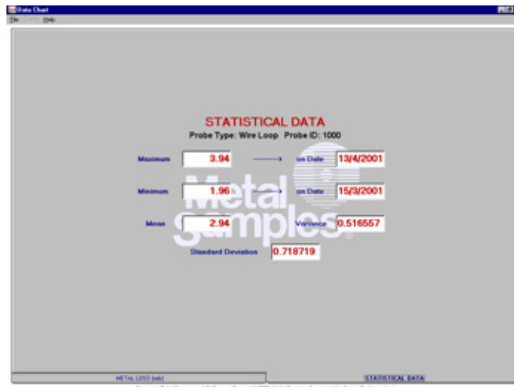
A chart can be exported to other applications using the *Copy Chart* option in the *File* menu. This will copy both the chart and the raw data to the Windows® Clipboard. The chart can then be inserted into other applications using the *Paste* function. Note: In some applications, using the *Paste* function will insert the raw data instead of the chart. In this case, use the *Paste Special* function, then select *Picture* to insert the chart.

## Chart Tools

- **Statistical Data**

The *Statistical Data* tab at the bottom of the Data Chart window will display a page with statistical information about the chart data. If the Statistical Data page is visible, this information can be printed by clicking *Print Statistical Data* in the *File* menu.





- **Finding A Data Points Value**

While viewing the chart, the value of any data point can be determined by simply clicking it. The value will be displayed in the charts tool-tip box (a small text box that is displayed near the mouse pointer). If the tool-tip box does not appear immediately after clicking the data point, hold the mouse pointer stationary over the chart background for a moment.

- **The Tools Menu**

The *Tools* menu contains a collection of utilities for viewing and manipulating the chart. The *Tools* menu can be accessed by clicking *Tools* on the menu bar, or by right-clicking anywhere on the chart.

Hide <u>D</u> ata Markers	Ctrl+D
Show <u>M</u> ean Value	Ctrl+M
Show <u>I</u> rend Line	Ctrl+T
<hr/>	
Title/ <u>F</u> ootnote Setup	Ctrl+F
<u>P</u> lot Setup	Ctrl+O
Data Series <u>C</u> olor	Ctrl+L
<hr/>	
<u>Z</u> oom <u>I</u> n	F5
<u>Z</u> oom <u>O</u> ut	F6
<hr/>	
<u>C</u> alculate Corrosion Rate	F7

- **Data Markers**

*Show Data Markers* toggles the data markers on and off.

- **Mean Value**

*Show Mean Value* toggles the mean value line on and off.

- **Trend Line**

*Show Trend Line* toggles the trend line on and off.

- **Title/Footnote Setup**

*Title/Footnote Setup* displays a window that allows the chart title and footnotes to be toggled on and off, and to be modified.

- **Plot Setup**

*Plot Setup* displays a window that allows configuration of Y-axis scaling, and of the chart type.

The Y-axis can be scaled to default values by checking the *Auto Scaling* option box. The Y-axis can be scaled to manual values by un-checking the *Auto Scaling* box, then entering the desired values in the *Minimum* and *Maximum* fields.

The chart type can be set to *Line Chart*, *Bar Chart*, or *Area Chart* by selecting the appropriate button in the *Chart Type* box. The default chart type is *Line Chart*.

- **Data Series Color**

*Data Series Color* displays a color selection box, which allows the user to select the brush color for the plot line. The default color for the plot line is Blue.

- **Zoom In**

*Zoom In* allows a region of the chart to be enlarged so that it may be viewed in greater detail. To enlarge a region of the chart, click on the two data points that define the left and right boundaries of the region.

In zoom mode, the mouse pointer will change to a cross-hair. When zoom mode ends, the mouse pointer will return to its normal state.

To cancel zoom mode, click *Cancel Zoom In* from the *Tools* menu, or simply press the *Esc* key.

- **Zoom Out**

*Zoom Out* restores the initial view of the chart, which displays the full data set.

- **Calculate Corrosion Rate**

If the chart contains ER data, the *Calculate Corrosion Rate* option will become available under the *Tools* menu. This option allows the corrosion rate to be calculated between any two data points on the chart. To calculate the corrosion rate click *Calculate Corrosion Rate*, then click two data points. The corrosion rate between those two data points will be displayed.

In calculate mode, the mouse pointer will change to an arrow/question mark. When calculate mode ends, the mouse pointer will return to its normal state.

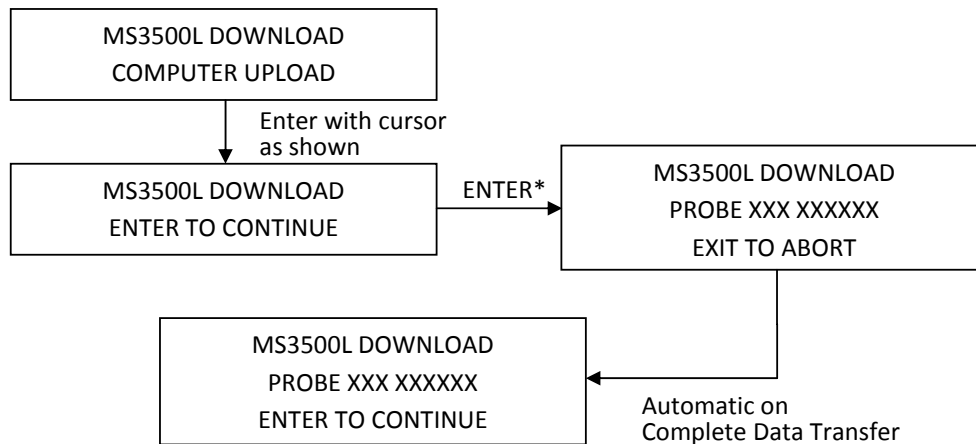
To cancel a calculation, click *Cancel Calculate* from the Tools menu, or simply press the *Esc* key.

## 2. Upload to MS1500L

The user must first connect the IN3500-2 cable between the Optilink™ connector on the MS6200L and the phone jack connection on the MS1500L.

Once the communication connection is made between the MS6200L and the MS1500L instruments, switch on the MS1500L and select a probe ID that corresponds to the probe ID of the MS6200L in question. The user must now scroll to the communication menu on the MS1500L and press enter.

The MS1500L communications submenu has the following screen sequence for download operations. **Note: The MS1500L communications menu does not list the model MS6200L. Select model MS3500L instead, as it uses the same communication parameters.**



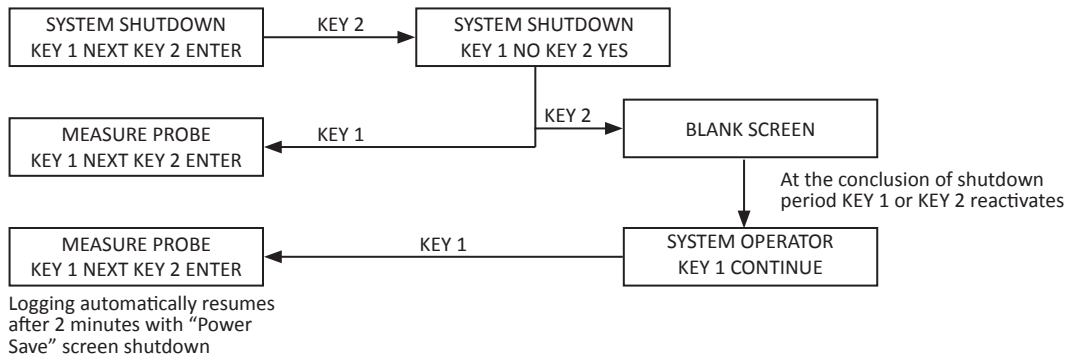
*\*Before executing this command, set MS6200L to “Waiting for Link Up” mode.*

After selecting the MS3500L “DOWNLOAD” option on the MS1500L communications menu, the communications mode should be selected on the MS6200L instrument. This is achieved by scrolling through the main functions menu, using KEY 1, until the “UPLOAD TO MS1500L” screen is reached. The submenu is accessed using KEY 2. The MS6200L screen will now display “WAITING FOR LINK UP”, and a KEY 1 exit option. The MS6200L is now waiting for the download instruction from the MS1500L. This instruction is given by pressing enter on the MS1500L unit. The MS1500L screen will now display the probe ID and type for the MS6200L in question, plus an option to use “EXIT” to abort the transfer. Data transfer is now in progress.

Upon completion of data transfer, the MS6200L screen will display “TRANSFER COMPLETE” and the MS1500L screen will automatically exchange the “EXIT TO ABORT” option for “ENTER TO CONTINUE” option. At this point the MS1500L can be disconnected, and the user may download data from the next MS6200L or upload data from the MS1500L to the PC.

## G. System Shutdown Function

This function allows the user to suspend the logging process for any period of time without data loss. The menu screen sequence to operate the function is as shown below:



To activate the system shutdown function, the user should scroll through the main function screens using KEY 1 until the "SYSTEM SHUTDOWN" function screen is reached. The user can now use KEY 2 to access the submenu. The screen will now ask for confirmation. KEY 2 will activate system shutdown; KEY 1 will return the user to the main function screens. If KEY 2 is used to activate "SYSTEM SHUTDOWN", data logging will cease but all existing data will be retained in memory.

When the user wishes to reactivate the logging process, either key can be used to access the screen, and KEY 1 will then resume the logging process.

## H. Test Mode Function

The test mode function is used for factory trouble shooting of faulty instruments returned for repair and in initial quality assessment of newly manufactured instruments. **This function is not required for normal instrument operation.**

# Appendix A - MS6200L Specifications

## **Model**

MS6200L - Bench-Top LPR Data Logger

## **Physical Data**

Instrument Weight: 2.25 lb. (1.02 Kg)  
Total Weight w/ Accessories: 4.45 lb. (2.02 Kg)  
Instrument Dimensions: 2.6"H x 10.3"W x 6.5"D (6.6cm x 26cm x 16.5cm)  
Operating Temperature: 32° to 122°F (0° to 50°C)  
Storage Temperature: -4° to 158°F (-20° to 70°C)

## **Performance Data**

Measurement Type	Range	Resolution	Cycle Time
2-Electrode	0 to 200 mpy	0.01 mpy	2 min to 99 hrs
3-Electrode	0 to 150 mpy	0.01 mpy	1 min to 99 hrs
Galvanic	± 999 µA	1 µA	1 min to 99 hrs
Potential	± 999 mV	1 mV	1 min to 99 hrs

## **Electrical Data**

Power Requirements: 100-240 VAC, 50/60 Hz  
Maximum Probe Cable Distance: 10 ft (3.05 m)  
Output Specifications: RS-232 Output in Comma-Delimited ASCII Text Format

## **Special Features**

- Microprocessor-based electronics
- Data storage capacity of 3,000 readings, with battery backup
- Menu-driven interface using a 2-key keypad and a 2-line LCD display

## **Accessory Items**

10' Probe Cable, Meter Prover, 6 to 5-Pin Adapter, Galvanic Adapter, Communications Cable and Connector, Operation Manual, Corrosion Data Management Software

# Appendix B - Derivation of Alloy Constant

The variation of the Stern Geary equation, relating the corrosion current  $i_{cor}$ , to the polarization resistance  $\Delta E/\Delta I$  is given by:

$$i_{cor} = \frac{\Delta I B_a B_c}{2.3 \Delta E (B_a + B_c)} \dots\dots\dots (1)$$

which reduces to:

$$i_{cor} = K \Delta I \dots\dots\dots (2)$$

- $i_{cor}$  = current due to corrosion (amps)
- $\Delta E$  = applied polarizing voltage (volts)
- $\Delta I$  = measured polarizing current (amps)
- $B_a + B_c$  = rate constants (volts/decade)
- $K$  = constant (dimensionless)

To convert the polarizing current to the conventional MPY (“MILS PER YEAR”) units of corrosion, Faraday’s laws are applied as follows:

$$C = \frac{i_{cor} \times S}{A \times F} \times \frac{E}{d} \times \frac{1000}{254} \dots\dots\dots (3)$$

$$= \frac{\Delta I \cdot k \times S}{A \times F} \times \frac{E}{d} \times \frac{1000}{254} \dots\dots\dots (4)$$

$$= \frac{\Delta I k}{A} \times \frac{E}{d} \times 128,668.6 \dots\dots\dots (5)$$

- $S$  = number of seconds in one year
- $F$  = Faraday’s constant (coulombs)
- $A$  = working electrode surface area in  $cm^2$
- $E$  = equivalent weight of corroding metal (gms)
- $d$  = density of corroding metal (gms.  $cm^{-3}$ )
- $C$  = corrosion rate (mpy)

Consequently, when the instrument calculates the corrosion rate (mpy) from the measured polarizing current ( $\Delta I$ ), a means needs to be found whereby the instrument can “know” the appropriate value of  $E/d$ , and perform the correct calculation of corrosion rate. This is achieved in the conventional, three-electrode LPR measurement by varying the surface area of working electrode in proportion to the  $E/d$  value of the metal/alloy in question, thus avoiding the need to program special correction factors into the instrument for each and every alloy.

Unfortunately, the major producer of the two-electrode probe uses a constant surface area for the working electrode, irrespective of the metal/alloy under examination. Thus a correction factor has to be applied for each metal/alloy under consideration. This is, in fact, the alloy constant used for two-electrode corrosion rate measurements in the MS1500L unit. The basic formula for derivation of the correction factor is:

$$A_k = \frac{0.55 \times E}{d} \dots\dots\dots 6$$

- $A_k$  = alloy constant
- $E$  = equivalent weight of metal/alloy in question (gms)
- $d$  = density of alloy in question (gms.  $cm^{-3}$ )

For pure metals, if the appropriate alloy constant does not appear in the MS1500L memory already, the user can apply equation 6 to calculate, and program, the appropriate alloy constant into the instrument memory.

Difficulties arise when trying to work out the equivalent weight of alloys. This is approached by use of a weighted average, assuming all major metallic constituents corrode in proportion to their weight percent for the alloy in question.

In general, metallic constituents present in amounts smaller than 1% are disregarded for the purposes of this calculation. An example of this is given below for AISI 302 Stainless Steel.

<u>Element</u>	<u>Percent</u>	<u>Eq. Wt.</u>	<u>Eq. Wt. x Percent</u>
Chromium	18	17.34	3.12
Nickel	9	29.35	2.64
Iron	73	27.92	20.39
Alloy Eq. Weight		=	<b>26.15</b>



## UNS Constant Table

The following lists many of the common constructional metals/ alloys with their appropriate alloy constants. All of these values are already programmed into the MS6200L memory. Additional alloy constants can be added by the user, applying the calculation principles outlined previously, and with reference to the Table of Equivalent Weights on p. 31.

<b>UNS#</b>	<b>Alloy Const.</b>	<b>Alternate Designation</b>	<b>Major Constituents (or common names)</b>
F12101	1.0	-	Gray Cast Iron
F13502	1.0	-	Gray Cast Iron
G10100	1.0	AISI 1010	0.1% Carbon Steel
G10180	1.0	AISI 1018	0.18% Carbon Steel
G10200	1.0	AISI 1020	0.20% Carbon Steel
K03504	1.0	ASTM A105	0.35% Carbon Steel
K03006	1.0	ASTM A106	0.3% Carbon Steel
K02504	1.0	ASTM A53	0.25% Carbon Steel
K03011	1.0	ASTM A350LF2	0.3% Carbon Steel
K01800	1.0	ASTM A516	0.18% Carbon Steel
G41300	1.0	AISI 4130	1% Cr 0.2% Mo Steel
K41545	1.0	ASTM A199	5% Cr 0.5% Mo. Steel
S50400	1.0	ASTM A199 (T9)	9% Cr 1.0% Mo. Steel
S30400	1.0	AISI 304	18% Cr 8% Ni S.S.
S30403	1.0	AISI 304L	18% Cr 8% Ni (Low Carbon) S.S.
S31600	1.0	AISI 316	18/Cr 10/Ni/ 3/Mo S.S.
S31603	1.0	AISI 316L	" (Low Carbon) S.S.
S32100	1.0	AISI 321	Ti Stabilized 18/8 S.S.
S41000	1.0	AISI 410	12% Cr. S.S.
S43000	1.0	AISI 430	17% Cr. S.S.
S31200	1.0	ASTM A182	26 Cr 6 Ni Duplex SS
S31803	1.0	ASTM A276	22 Cr 5 Ni 3 Mo. Duplex S.S.
C11000	2.0	AMS 4500	99.90 Copper
C26000	1.8	AMS 4505	70-30 Brass
C28000	1.8	ASME SB111	Muntz Metal (60% Cu)
C23000	1.9	ASME B16.22	85-15 Brass

<b><u>UNS#</u></b>	<b><u>Alloy Const.</u></b>	<b><u>Alternate Designation</u></b>	<b><u>Major Constituents (or common names)</u></b>
C63000	1.9	AMS 4640	Aluminum Bronze
C68700	1.9	ASME SB111	Aluminum Brass (Arsenical)
C44300	1.8	ASME B111	Admiralty Brass
C70690	1.9	ASTM F96	90-10 Copper Nickel
C71590	1.6	ASTM F96	70-30 Copper Nickel
N04400	1.2	AMS 4544	Monel 400
N08825	1.0	ASME B163	Incoloy 825
N06600	1.0	AMS 5540	Inconel 600
N06625	1.0	AMS 5401	Inconel 625
N10001	1.0	AMS 5396	Hastelloy B
N10002	1.0	AMS 5388	Hastelloy C
N10276	1.0	ASME B366	Hastelloy C-276
N02201	0.9	AMS 5553	Nickel 201
N08904	1.0	ASME B625	23-1-4-25 Cr-Cu-Mo-Ni
Z13001	1.3	ASTM B6	99.990 Zinc
R05200	0.6	ASTM B364/365	Tantalum
R50250	0.7	ASTM F67	Titanium
R60701	1.0	ASTM B493	Zirconium
A96061	0.9	AA6061	Aluminum

### Table of Equivalent Weights

<u>Name</u>	<u>Symbol</u>	<u>Atomic Wt.</u>	<u>Valence</u>	<u>Equivalent Wt.</u>
Actinium	Ac	(227)		
Aluminum	Al	26.98	3	8.99
Americium	Am	243		
Antimony	Sb	121.76	3	40.58
Arsenic	As	74.92	3	24.97
Barium	Ba	137.36	2	68.68
Berkelium	Bk	(247)		
Beryllium	Be	9.013	2	4.51
Bismuth	Bi	208.99	3	69.66
Cadmium	Cd	112.41	2	56.20
Calcium	Ca	40.08	2	20.04
Cerium	Ce	140.13	3	46.71
Cesium	Cs	132.91	1	132.91
Chromium	Cr	52.01	3	17.34
Cobalt	Co	58.94	2	29.47
Columbium, See Niobium				
Copper	Cu	63.54	1	63.54
Curium	Cm	(247)	3	82.33
Dysprosium	Dy	162.51	3	54.17
Erbium	Er	167.27	3	55.75
Europium	Eu	152.0	2	76.0
Francium	Fr	223	1	223
Gadolinium	Gd	157.26	3	52.42
Gallium	Ga	69.72	2	34.85
Germanium	Ge	72.60	4	18.15
Gold, Arum	Au	197.0	3	65.66
Hafnium	Hf	178.50	4	44.62
Holmium	Ho	164.94	3	54.98
Indium	In	114.82	3	38.27
Iridium	Ir	192.2	3	64.06
Iron	Fe	55.85	2	27.92
Lanthanum	La	138.92	3	46.30
Lead,				
Plumbum	Pb	207.21	2	103.6
Lithium	Li	6.94	1	6.94
Lutetium	Lu	174.99	3	58.33
Magnesium	Mg	24.32	2	12.16

<b>Name</b>	<b>Symbol</b>	<b>Atomic Wt.</b>	<b>Valence</b>	<b>Equivalent Wt.</b>
Manganese	Mn	54.94	2	27.47
Mercury	Hg	200.61	1	200.6
Molybdenum	Mo	95.95	2	47.97
Neodymium	Nd	144.27	3	48.09
Neptunium	Np	(237)	5	47.40
Nickel	Ni	58.71	2	29.35
Niobium (Columbium)	Nb	92.91	5	18.58
Osmium	Os	190.2	8	23.77
Palladium	Pd	106.4	2	53.2
Platinum	Pt	195.09	2	97.55
Plutonium	Pu	(244)	5	48.80
Potassium	K	39.1	1	39.1
Praserodymium	Pr	140.92	3	46.97
Promethium	Pm	(145)	3	48.33
Radium	Ra	226	2	113
Rhenium	Re	186.22	4	46.55
Rhodium	Rh	102.91	3	34.30
Rubidium	Rb	85.48	1	85.48
Ruthenium	Ru	101.1	3	33.7
Samarium	Sm	150.35	2	75.17
Scandium	Sc	44.96	3	14.98
Selenium	Se	78.96		
Silver	Ag	107.87	1	107.9
Sodium	Na	22.99	1	22.99
Strontium	Sr	87.23	2	43.81
Tantalum	Ta	180.95	5	36.19
Technetium	Tc	(97)	6	16.16
Tellurium	Te	127.61	3	42.53
Terbium	Tb	158.93	3	52.97
Thallium	Tl	204.39	1	204.39
Thorium	Th	(232)	4	58.0
Thulium	Tm	168.94	3	56.31
Tin, Stannum	Sn	118.70	2	59.35
Titanium	Ti	47.90	4	11.97
Tungsten	W	183.86	4	45.96
Uranium	U	238.07	4	59.51
Vanadium	V	50.95	2	25.47
Ytterbium	Yb	173.04	2	86.52

# Appendix C - Service & Warranty Information

## A. Warranty

Metal Samples warrants that any part of the model MS6200L Benchtop LPR Data Logger and accessories which proves to be defective in material or workmanship within one year of the date of original shipment to Purchaser will be repaired or replaced, at Metal Samples option, free of charge. This warranty does not cover (1) probe assemblies, (2) items expendable in nature, or (3) items subject to damage from normal wear, misuse or abuse, or failure to follow use and care instructions.

All damaged items are to be shipped at Purchaser's expense to and from Metal Samples which shall have the right to final determination as to the existence and cause of a defect.

The foregoing shall constitute the sole and exclusive remedy of any purchaser of Metal Samples products for breach of warranty and IS EXCLUSIVE AND IN LIEU OF ALL OTHER WARRANTIES, EXPRESSED, IMPLIED OR STATUTORY, INCLUDING THE IMPLIED WARRANTIES OR MERCHANTABILITY AND FITNESS. IN NO EVENT SHALL METAL SAMPLES BE LIABLE FOR SPECIAL OR CONSEQUENTIAL DAMAGES, OR FOR ANY DELAY IN THE PERFORMANCE OF THIS WARRANTY DUE TO CAUSES BEYOND ITS CONTROL.

The technical information and suggestions contained herein are believed to be reliable, but they are not to be construed as warranties since conditions of use are beyond our control.

## B. Obtaining Service & Returning the Instrument for Repair

If you experience problems with your instrument please contact the factory at 256-358-4202 and ask for customer support for instrumentation. Our customer support department will assist you in troubleshooting your instrument.

Most issues can be resolved over the phone, but in some cases it may be necessary to return your instrument for further evaluation and repair. In this case, please obtain a Return Materials Authorization (RMA) number from the sales person or support technician. This RMA number will ensure that your instrument is routed to the correct department when it is received at the factory.

After receipt of an RMA number you may pack your instrument for return. Be sure to pack your instrument in a sturdy box and to pad it sufficiently to avoid damage during transit. Also be sure to complete the "Instrument Repair Form" on the next page and include a copy with your repair. This will ensure that the repair department has sufficient information regarding the problems you are experiencing with your instrument, as well as the billing, contact, and return shipping details for the repair.

Once you have obtained an RMA number, completed the "Instrument Repair Form", and packed your instrument securely, please ship it prepaid to the following address:

Metal Samples  
152 Metal Samples Road  
Munford, AL 36268  
ATTN: RMA# \_ \_ \_ \_ \_

NOTE: Be sure to list your RMA number in the attention line (shown as blanks in the example above.)

## C. Instrument Repair Form

This form may be photocopied for use when returning an instrument to Metal Samples for repair. Please fill in all known information and enclose a copy of the completed form with the instrument.

General Information			
Model Number		Serial Number	
RMA Number		Date of Purchase*	
<i>*If known.</i>			
Contact Information for Repair			
Contact Name		Company	
Phone Number		E-mail Address	
Return Shipping Information			
Recipient Name*		Company*	
Return Address			
<i>*If different than above.</i>			
Reason for Return (Provide as much detail as possible. Attach additional pages if required.)			
Invoice Instructions (For non-warranty repairs.)			
<input type="checkbox"/>	Invoice me for the repair. <i>(Requires an open account with Metal Samples.)</i>	—————▶	Reference PO#
<input type="checkbox"/>	Contact me for credit card information. <i>(For security purposes, do not list credit card information on this form.)</i>		